

City of Cleveland

Euclid Creek Watershed Fact Sheet



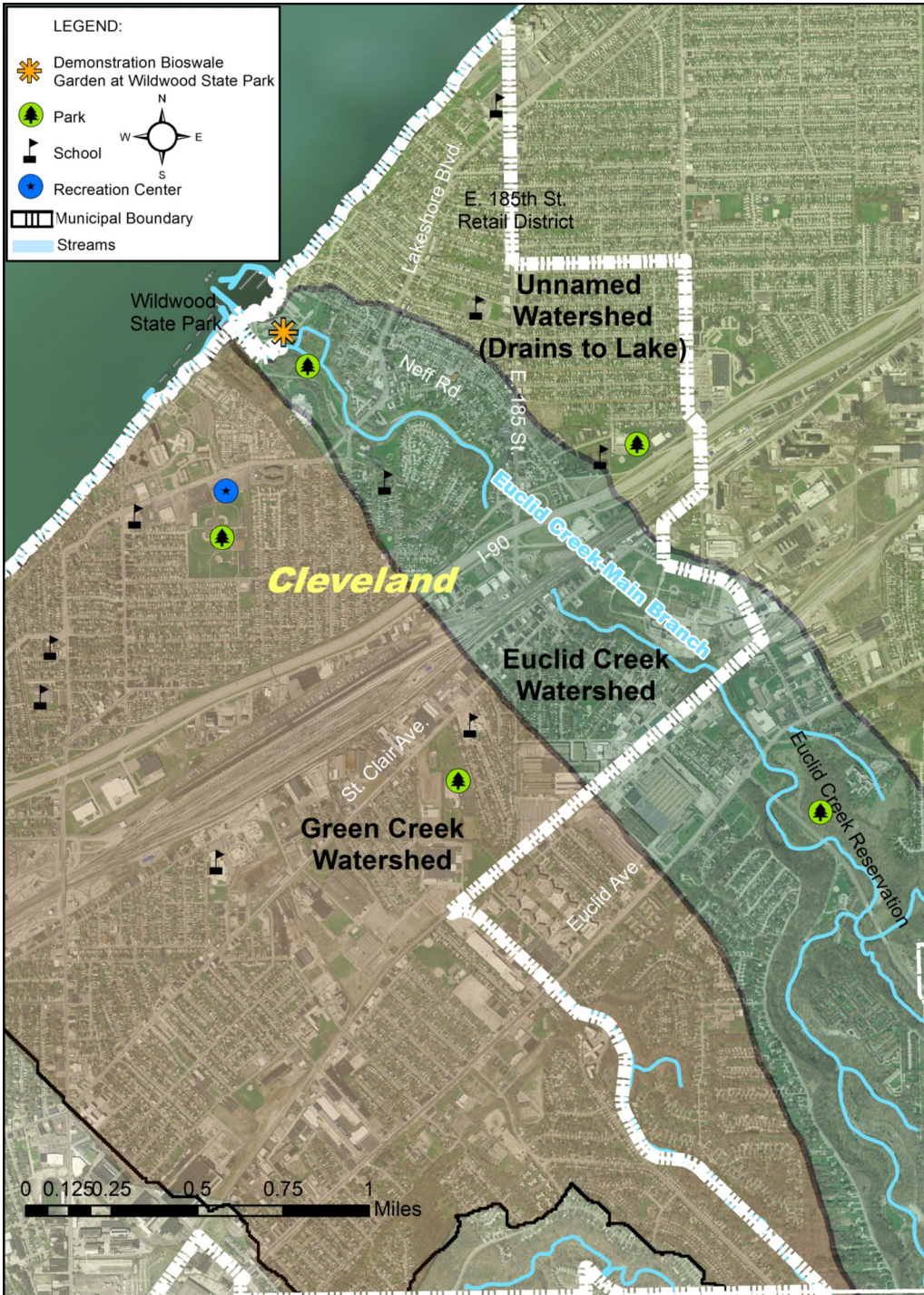
Euclid Creek and two neighboring watersheds are in the portion of Cleveland shown below*

Euclid Creek drains an area of approximately 24 square miles from 12 communities in Cuyahoga and Lake Counties.

Green Creek drains approximately 5 square miles from 5 communities in Cuyahoga County.

Unnamed Watershed drains approximately 10 square miles from 3 communities in Cuyahoga County.

*** Cleveland has a total of 13 watersheds**



All 3 of these watersheds **drain directly into Lake Erie**, Cleveland's source of **drinking water**. Protecting your watersheds from runoff pollution also protects **Lake Erie** and **YOU!**

Did you know?

- The portion of Cleveland shown in the map has **5.12 miles** of streams above ground and about **1.31 miles** of streams that have been channeled underground in pipes/culverts.
- As water moves across lawns and hard surfaces into storm drains, pollution is picked up and carried untreated to creeks and rivers, which eventually empty into Lake Erie.
- Vegetated surfaces, like lawns and rain gardens, help absorb water into the ground and allows for natural filtration of polluted rain water runoff.
- The rate of extinction for freshwater animals is 5 times greater than that for land animals.

Only Rain Down the Storm Drain!

What is a watershed?

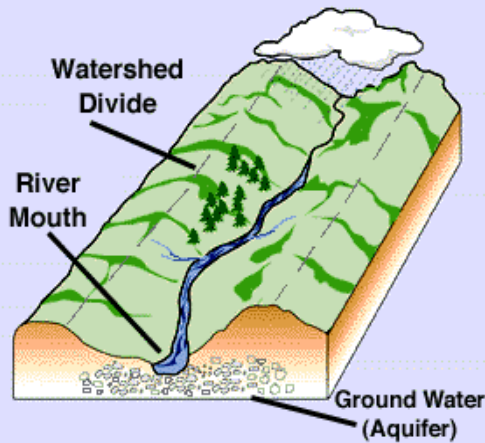
Flip to find out

WATER—THE ULTIMATE RESOURCE

What is a watershed? A watershed is an area of land that drains rain and snowmelt to a common body of water, such as a stream, river, or lake. Cleveland's landscape is comprised of interconnected watersheds.

We all live in a watershed

A Watershed



Cleveland within Euclid Creek Watershed

- Cleveland makes up 3.8% or 0.92 square miles of the Watershed.
- Wildwood State Park, at the mouth of Euclid Creek and Lake Erie, is roughly 53 acres with a marina, picnic shelter and trails and serves as a great neighborhood amenity.
- Cleveland has the E. 185th St./St. Clair spillway, the largest dam within the watershed, about 10 ft. high, that was created in 1961 to channel Euclid Creek below I-90.
- The Nottingham Water Treatment Plant in Cleveland is along the main branch of Euclid Creek and provides the Euclid Creek Watershed communities with water.
- About 2.49 miles of Euclid Creek runs through Cleveland, of which 26% is channeled underground.
- In 1988 a concrete flood control channel was built by the Army Corps of Engineers to control creek flooding from Lakeshore Blvd. to I-90, a 0.61 mile stretch.

Cleveland within Unnamed Watershed

- Historic Euclid Beach and Villa Angela State Park are located in this watershed, with 1,500 feet of swimming area, beach, boardwalk, pavilion, and scenic overlooks.
- R.J. Taylor Park is a great 7.4-acre greenspace serving the Nottingham neighborhood.

Cleveland within Green Creek Watershed

- A new recreation center is adjacent to Humphrey Park on Lakeshore Blvd.
- Green Creek is mostly underground in pipes through Cleveland.

Major water quality issues

- **Excess nutrients**, such as phosphorous and nitrogen, caused by urban pollution and fertilizers from gardens, lawn and turf maintenance.
- **Low fish populations** due to poor water quality as well as loss of habitat and man-made barriers (e.g. dams).
- After major storms, high intensity stream flow (called **flashy flows**) increases **stream bank erosion**.
- Discharges from **combined sewer overflows (CSOs)** due to flashy flow events.



Photo by John Cozzarin, Euclid Creek

How the CITY protects your water

- Partners with Cuyahoga Soil & Water Conservation District (SWCD) and other watershed communities in the Euclid Creek Watershed Council.
- The Division of Water Pollution Control (WPC) is Cleveland's stormwater manager/agent.
- Cleveland sponsors an "Only Rain Down the Storm Drain" education campaign.
- Through various partnerships the City has given away more than 1,000 free rain barrels to residents since 2008.
- Offers household hazardous waste recycling for residents.
- The Division of WPC is constructing a stormwater management project funded partially by a \$260,158 Ohio EPA, Surface Water Improvement Fund (SWIF) grant. The project utilizes rain gardens, bioswales, pervious pavement and a rainwater storage tank to improve water quality through filtration and by recycling stormwater.
- In 2009, the City partnered with SWCD and others to plant a 375 ft. by 6 ft. bioswale (a depression designed to slow and retain stormwater runoff with native plants to filter pollutants) in the marina parking lot of Wildwood State Park.

How YOU can protect your water

- Don't litter, and pick up litter where you see it.
- Keep grass clippings, paper and other waste out of storm drains.
- Report illegal dumping! Call the City of Cleveland (216-664-DUMP(3867) or the County Board of Health (216-201-2000).
- Install a rain barrel and/or plant a rain garden.
- Pick up outside pet waste and put it in the trash.
- Reduce hard surfaces. Replace your driveway and walkways with permeable paving.
- Clean paint from brushes, rollers and pans in the sink.
- Wash your car on the lawn or at a carwash.
- Reduce the use of toxic chemicals around your home.
- Never put motor oil, antifreeze, pet waste or anything else in storm drains.
- Keep your lawn 3 inches or higher to aid in water filtration.
- Reduce your use of fertilizers, pesticides and other chemicals on your lawn and garden.

Get involved with your local conservation/watershed group and take part in keeping your watershed clean and healthy.

Euclid Creek Partners

Euclid Creek Watershed Council

(Cleveland is a Watershed Council member)

Friends of Euclid Creek

Cuyahoga Soil & Conservation District



Euclid Creek Watershed Coordinator

Claire Posius

6100 West Canal Road
Valley View, Ohio 44125

216-524-6580x16; cposius@cuyahogawcd.org

Euclid Creek Website: www.cuyahogawcd.org

Click on *Services - Watershed Programs - Euclid Creek*



City of Cleveland

Division of Water Pollution Control

12302 Kirby Avenue
Cleveland, Ohio 44108

216-664-2513

www.ClevelandWPC.com

Fact Sheet printed on 100% recycled paper
Printing costs provided by Northeast Ohio Regional Sewer District