

# City of South Euclid Watershed Fact Sheet



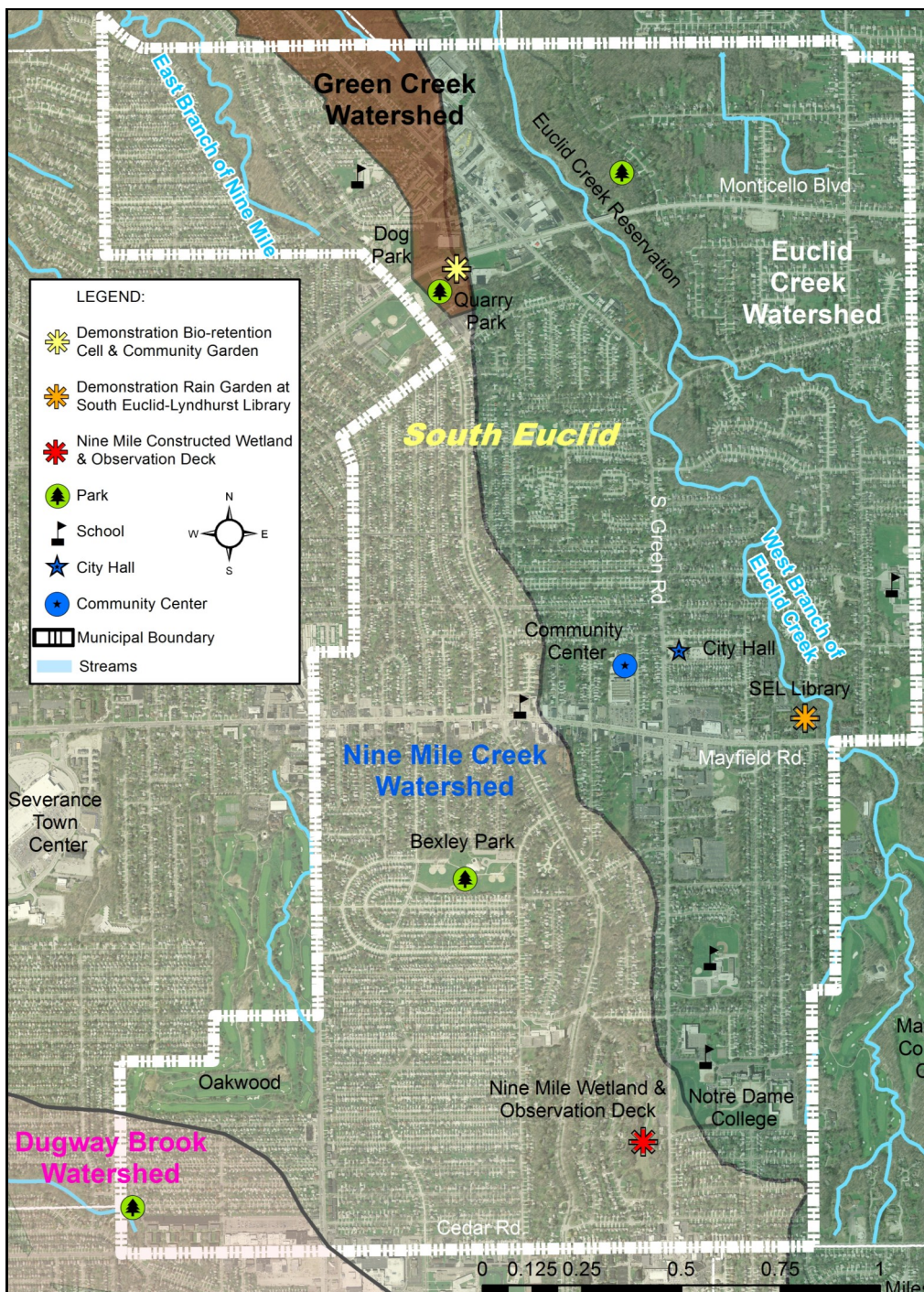
## South Euclid is in 4 watersheds

**Euclid Creek** drains an area of approximately 24 square miles from 12 communities in Cuyahoga and Lake Counties.

**Nine Mile Creek** drains an area of approximately 18 square miles from 7 communities in Cuyahoga County.

**Green Creek** drains an area of approximately 5 square miles from 4 communities in Cuyahoga County.

**Dugway Brook** drains an area of approximately 9 square miles from 7 communities in Cuyahoga County.



All 4 of these watersheds **drain directly into Lake Erie**, South Euclid's source of **drinking water**. Protecting your watersheds from runoff pollution also protects **Lake Erie and YOU**.

### Did you know?

- South Euclid has **4.76 miles** of streams above ground with an estimated **3.61 miles** of additional streams that have been channeled underground in pipes/culverts.
- As water moves across lawns, and hard surfaces into storm drains, pollution is picked up and sent untreated to creeks and rivers which eventually empty into Lake Erie.
- Vegetated surfaces, like rain gardens, help water soak into the ground which allows for natural filtration of polluted runoff.
- The rate of extinction for freshwater animals is 5 times greater than that for land animals.

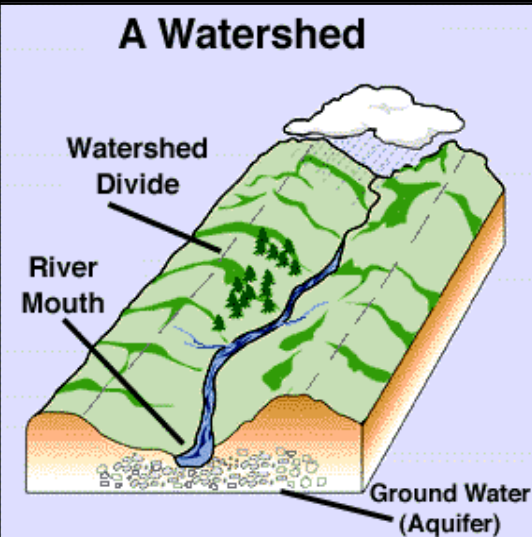
**Only Rain Down the Drain!**

**What is a watershed?**  
**Flip to find out!**

# WATER—THE ULTIMATE RESOURCE

**What is a watershed?** A watershed is an area of land that drains rain and snow to a common body of water such as a stream, river, or lake. Our landscape is made up of interconnected watersheds.

**We all live in a watershed!**



## South Euclid within Euclid Creek Watershed

- South Euclid makes up 10.5% or 2.5 square miles of the entire Euclid Creek Watershed.
- 52% of South Euclid residents live within the Euclid Creek Watershed.
- A portion of the Euclid Creek Reservation runs through South Euclid.
- South Euclid contains several areas of commercial and light industry that have large areas of impervious (hard surfaces such as pavement) surfaces.

## South Euclid within Nine Mile Creek Watershed

- 92% of the land is developed.
- Water quality and aquatic habitat is severely impaired along most of Nine Mile Creek.
- Most surface water runs through culverts and is replenished by storm drains, creating significant urban runoff.
- Above-ground flow is primarily channelized and concrete-lined, and receives high nutrient loads.
- The majority of Nine Mile Creek is buried underground from its beginning near Cedar Rd. in University Heights to a channelized run north of Monticello and west of Belvoir Blvd.

## South Euclid within Green Creek Watershed

- No watershed studies exist, but it is assumed that Green Creek has the same urban impairments as its surrounding watersheds.

## South Euclid within Dugway Brook Watershed

- South Euclid makes up 1.9% or 1.7 square miles of the entire Dugway Brook Watershed.
- No watershed studies exist for this watershed.

### Major water quality issues

- **Excess nutrients**, such as phosphorous and nitrogen, caused by urban pollution and fertilizers from gardens, lawn and turf maintenance.
- **Low fish populations** due to poor water quality as well as loss of habitat and man-made barriers (e.g. dams).
- After major storms, high intensity stream flow (called **flashy flows**) increases **stream bank erosion**.
- **Loss of green space and habitat** surrounding streams that provide a buffer zone to filter pollutants and provide shelter/food for bugs and fish.



### How the CITY protects your water

- Picks up leaves in fall to prevent clogging of storm drains.
- Active member of the Euclid Creek Watershed Council.
- Works with Cuyahoga County Board of Health on all public health concerns.
- Nine Mile Wetland constructed in 2008—replaced the Langerdale Retention Basin (between Green Road and Belvoir Blvd. north of Cedar Road) with a built wetland to create naturally vegetated areas that will slow, hold, and filter sediment and pollutants from rain and storm water.
- Incorporates storm water management and green building practices for Green Neighborhoods Initiative housing renovations.
- Offers household hazardous waste (and other) recycling programs for residents.
- Adopted Sensible Salting Resolution and is investigating salt alternatives.
- Has stream and wetland protection ordinance.

### How YOU can protect your water

- Don't litter, and pick up litter where you see it.
- Keep grass clippings, paper and other waste out of storm drains.
- Report illegal dumping! Call the District hotline (216-641-3200) or the Cuyahoga County Board of Health (216-201-2000).
- Install a rain barrel and/or plant a rain garden.
- Pick up outside pet waste and put it in the trash.
- Reduce hard surfaces. Replace your driveway and walkways with permeable paving.
- Clean paint from brushes, rollers and pans in the sink.
- Wash your car on the lawn or at a carwash.
- Reduce toxic substance usage around your home and on the lawn and garden.
- Never put motor oil, antifreeze, pet waste or anything else in storm drains.
- Reduce your use of fertilizers, pesticides and other chemicals on your lawn and garden.
- Keep your lawn 3 inches or higher to aid in water filtration.

**Get involved with your local conservation / watershed group and take part in keeping your watershed clean and healthy.**

#### Euclid Creek Partners

**Euclid Creek Watershed Council**

(South Euclid is a Watershed Council member)



**Friends of Euclid Creek**

**Cuyahoga Soil & Conservation District**

#### Euclid Creek Watershed Coordinator

Claire Posius  
6100 West Canal Road  
Valley View, Ohio 44125

216-524-6580x16; cposius@cuyahogawcd.org

Euclid Creek Website: [www.cuyahogawcd.org](http://www.cuyahogawcd.org)

Click on *Services - Watershed Programs - Euclid Creek*



#### City of South Euclid

1349 South Green Road  
South Euclid, Ohio 44121  
216-381-0400

[www.cityofsoutheuclid.com](http://www.cityofsoutheuclid.com)